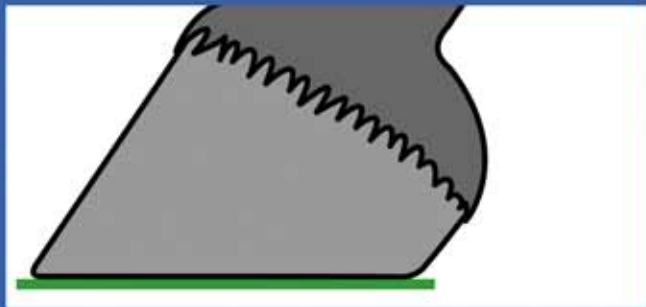


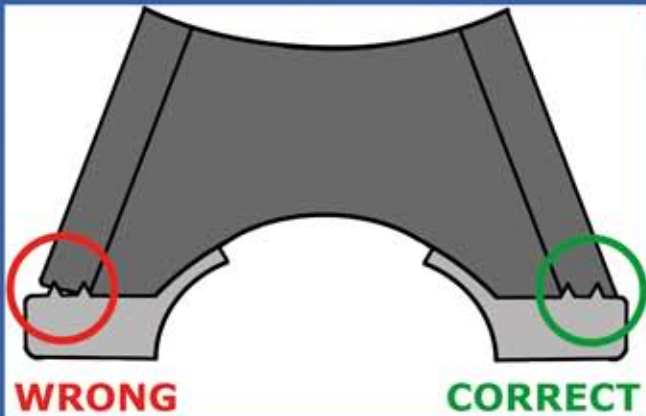
The correct application of the Duplo Composite Horseshoe is easy if you have the necessary knowledge of and competence in professionally nailing and clinching horseshoes and if you consider certain aspects while doing this.



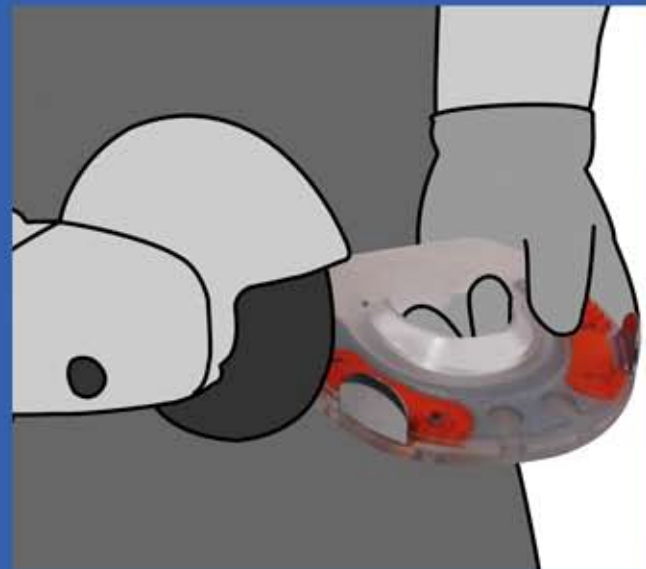
Prepare the hoof according to the usual principles.



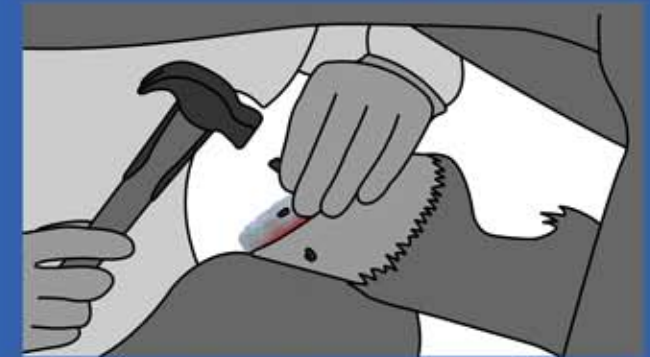
Please make sure that the hoof wall is absolutely plane after rasping!



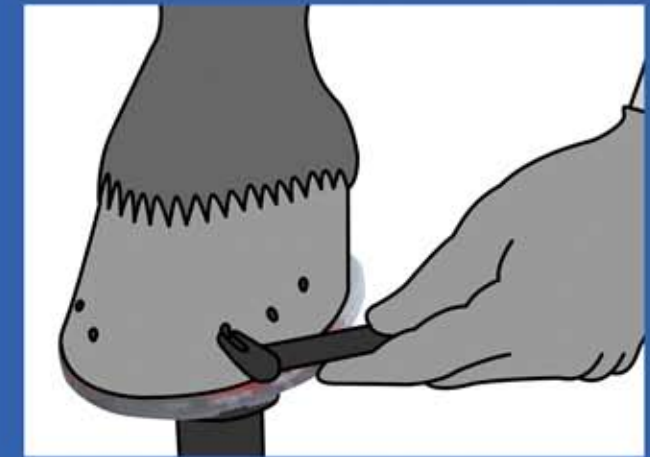
Choose a fitting horseshoe according to hoof size, hoof shape and intended use.



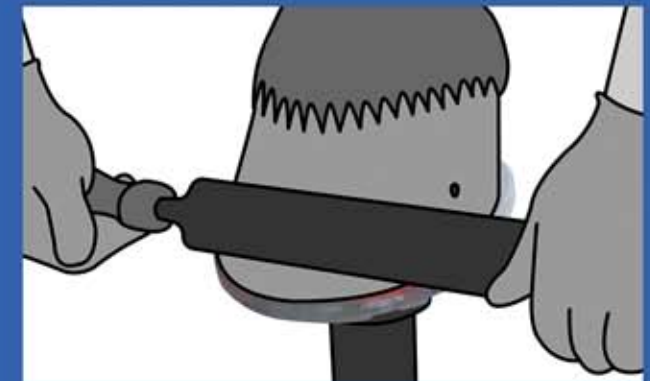
Adjust the horseshoe to the hoof with an angle grinder or belt grinder.



Use standard nails to fix the horseshoe.



Clinch the nails thoroughly and adjust potential quarter clips to the hoof angle.



Finally, smooth the hoof wall and the clinched nails.



*Finished!*



Check our website for a more detailed version of our shoeing instruction (with video)!

[www.duplo-frank.de/en/shoeing-instruction](http://www.duplo-frank.de/en/shoeing-instruction)

Please also memorize our Safety Information!

[www.duplo-frank.de/en/safety](http://www.duplo-frank.de/en/safety)

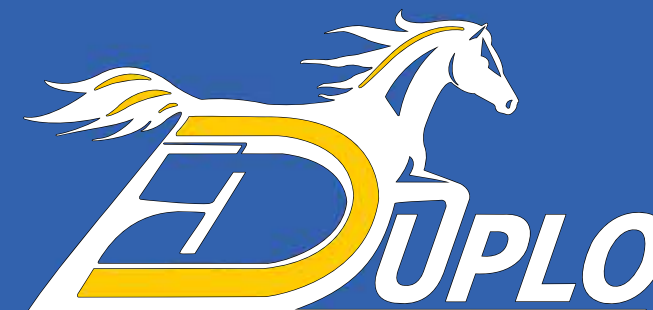
[www.duplo-frank.de](http://www.duplo-frank.de)



Duplo Composite Horseshoes  
H. Frank Kunststofftechnik GmbH  
Vorderfreundorfer Straße 20  
D-94143 Grainet  
Phone: +49 (0)8585/96926-0  
Fax: +49 (0)8585/96926-29  
[info@duplo-frank.de](mailto:info@duplo-frank.de)  
[www.duplo-frank.de](http://www.duplo-frank.de)  
[www.duplo-innovations.com](http://www.duplo-innovations.com)

# DUPLO

## Shoeing Instruction



Latest Update: March 2019